



# Kalele Currents

## SUMMERTIME

As we embark on the summer season, it is the perfect time to take a leisurely stroll and bask in the enchanting ambiance of our breathtaking landscape lighting, it highlights the beauty of our Kalele Kai in a whole new light.

I would like to extend our heartfelt gratitude to Todd Light, whose unwavering commitment and meticulous attention to detail were instrumental in spearheading the remarkable landscape lighting project. We applaud his dedication and thank him for his invaluable contribution and recognize our staff and the contractors who made this happen.

Over the past several months, Kalele Kai has been bustling with spring cleaning activities, ensuring that our surroundings are pristine and well-maintained. Charles and Glenn deserve special recognition for their outstanding work in repairing our barbecue grill area, just in time for our summer cookouts. Additionally, our gutters have been thoroughly cleared, and the dryer vents cleaned to enhance safety and efficiency.

Moreover, we have undertaken a comprehensive insulation project for the Chiller pipes on building 3. Our maintenance team has invested considerable effort in replacing drain-pipes in various areas throughout the building, as well as exploring different options for both pipe replacement and rehabilitation. These initiatives reflect our commitment to ensuring a comfortable living environment for all residents.

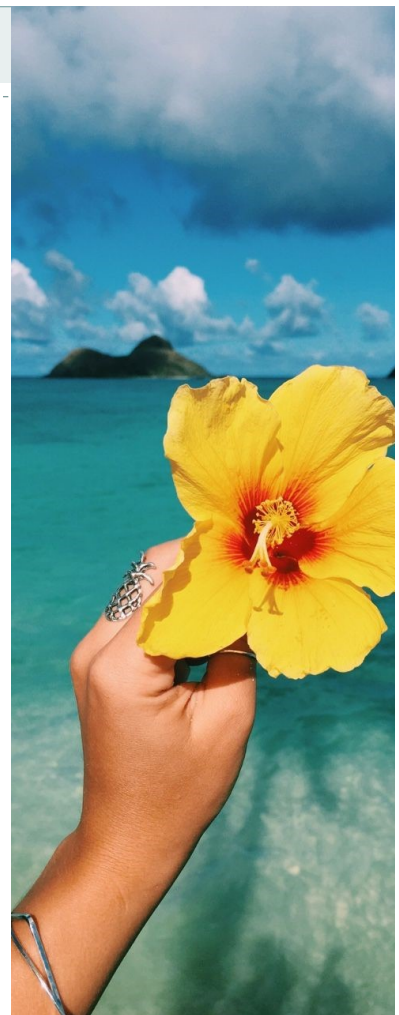
Looking ahead to the coming months, we have an exciting lineup of projects scheduled for implementation. We will be replacing control panels in the elevators of Building 2, enhancing the look, efficiency, and reliability of our elevators. Additionally, the elevator door panels in Building 1 will undergo “reskinning”.

And as summer draws to a close, we are pleased to announce that renovations will commence on the pool restrooms. We look forward to the completion of these projects and the positive impact they will have on our community.

In conclusion, as the temperatures rise and summer unfolds before us, whether you prefer a refreshing lemonade or an adult beverage, let us take a moment to relax and savor the delights of this vibrant season.

Wishing you all a memorable summer filled with joy, relaxation, and wonderful moments in our cherished community.

Roz Hamby  
Board President



### INSIDE THIS ISSUE

- Summertime .....1
- Pool Rules .....2
- Power Outages .....2
- El Nino .....3
- Henry J Kaiser .....4



## POOL RULES REMINDER

### G- 4 Conduct

Horseplay, running, diving, screaming, or other boisterous conduct is not permitted in the pool area. Loud games, such as Marco Polo are prohibited.

### G- 7 Noise

Headsets must be used with radios, audio and video equipment while in the pool area. No amplified music is allowed in the pool area at any time.

### G- 10 Equipment

Scuba equipment, inner tubes, swimming fins, toys, or other equipment shall not be allowed in the pool. However, non-swimmers using the pool under the direct supervision of a competent swimmer may use personal flotation devices.

### G - 13 NUMBER OF POOL GUESTS

Six (6) guests at a time, per apartment, may utilize the pool and adjacent area. This ensures that all residents are able to comfortably use the pool and area at any given time.

## CALENDAR

6/22—Board Meeting 5:30 PM @ cabana

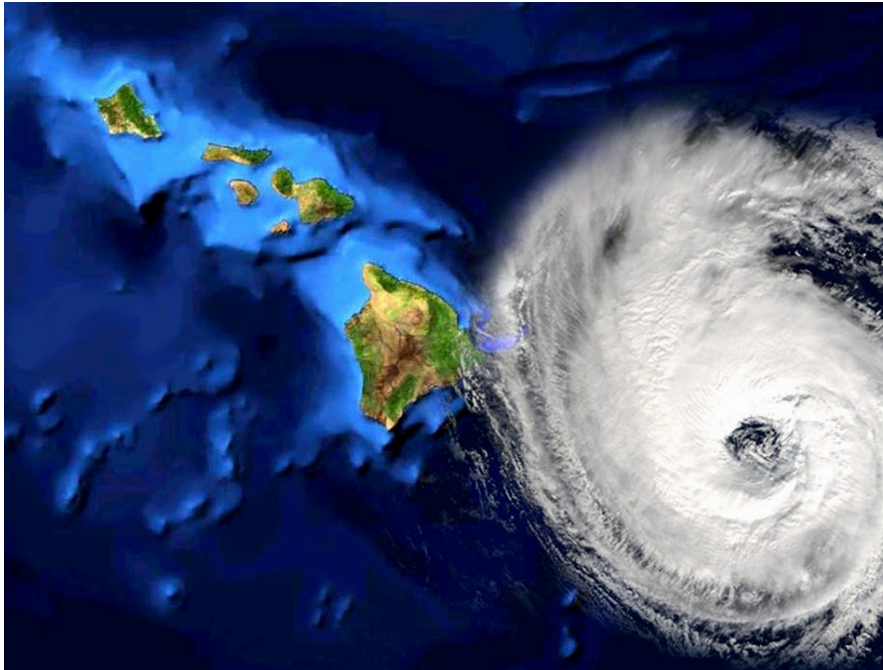
6/23—Dryer Duct Cleaning for missed units

7/4— Management Closed

## POWER OUTAGE TIPS

It was not too long ago where we experienced a power outage that lasted several hours that affected the entire Hawaii Kai neighborhood. Here are some power outage tips for you to keep in mind for the next time.

- ◆ Keep freezers and refrigerators closed for as long as you can.
- ◆ Use the stair if you need to leave; the elevators will not operate.
- ◆ Disconnect appliances and electronics to avoid damage from electrical surges.
- ◆ Have alternate plans for refrigerating medicines or using power-dependent medical devices.
- ◆ Check the news/HeCO website or mobile apps for updates.
- ◆ When in doubt, throw it out! Throw away any food that has been exposed to temperatures 40 degrees or higher for two hours or more, or that has an unusual odor, color or texture.
- ◆ If the power is out for more than a day, discard any medication that should be refrigerated, unless the drug's label says otherwise. Consult your doctor or pharmacist immediately for a new supply.



## EL NIÑO SPELLS A BUSY HURRICANE SEASON

When El Niño occurs, it creates conditions that significantly impact hurricane activity in different regions. In the Pacific, the weakening of trade winds allows warm ocean waters to accumulate near the equator west of South America, leading to a shift in the jet stream and changes in rainfall and temperature patterns. As a result, the Pacific region experiences more active hurricane seasons during El Niño events.

Specifically, in the eastern North Pacific basin, El Niño generates an upper-level ridge or high-pressure area, which reduces vertical wind shear. This favorable environment promotes the formation and intensification of hurricanes, contributing to increased hurricane activity in the region.

Considering the potential for an active hurricane season in the Pacific region due to El Niño, it is crucial for individuals and communities to be well-prepared. We strongly encourage everyone to stay informed about weather forecasts and advisories, develop emergency plans, secure necessary supplies, and, most importantly, follow any evacuation orders or guidelines issued by local authorities. By taking preparedness measures, we can mitigate the potential impacts of hurricanes and ensure the safety of ourselves and Kalele Kai.

Additionally, AARP, a leading organization focused on seniors' interests, provides additional recommendations specifically geared towards healthcare and personal needs. They also advise having a minimum three-day supply of medications (in Hawaii a 2-week supply is comparable), along with a cooler and ice packs if refrigeration is required. Do not forget any necessary medical supplies, such as syringes. For individuals who wear contact lenses, it is important to have contact lens solution available, as well as backup glasses and/or hearing aids, along with extra batteries.

In the event of an emergency, having proper identification is essential. Make sure your identification includes your full name, a list of any allergies you may have, and a contact number for a family member. This information will aid first responders in providing you with appropriate care.

As we venture into this hurricane season, let us proactively take steps to ensure our safety and well-being. By preparing in advance, we can navigate any potential challenges with resilience and peace of mind. Stay informed, stay prepared, and most importantly, stay safe.

HECO publishes an excellent Handbook for Emergency Preparedness which can be downloaded by clicking the following link: <https://www.hawaiianelectric.com/prepare>

We will also have a limited supply in the office.

### KALELE KAI BOD

#### Officers

Rosalind Hamby	President
Todd Light	Vice-President
Mark Hertel	Secretary
Paul Jordan	Treasurer

#### Directors

Marsha Alegre
Chris Nielsen
Art Isbell
Bill Oberlin
Hugh Hazenfield

#### Committees

Buildings
Energy
Finance
House Rules
Landscaping
Security

#### Chair

Mark Hertel
Art Isbell
Paul Jordan
Hugh Hazenfield
Todd Light
Bill Oberlin

The Board welcomes volunteers to serve on committees. If you are interested in serving your community, please contact our office.

#### General Manager

Bill Comstock (808)-395-0431  
gm@kalelekai.com

#### Assistant General Manager

Anna McLain (808)-395-0431  
agm@kalelekai.com

#### Managing Agent

Hawaiiana Management  
(808)-593-6362

#### Property Manager

Rocksford Takamatsu  
rocksford@hmcmtg.com

## SPOTLIGHT ON HENRY J. KAISER

Henry J. Kaiser had a profound and lasting impact on our nation's infrastructure and defense, leaving behind a legacy of engineering and construction innovations that revolutionized various industries. From his early beginnings as a machine shop owner in Seattle to his ventures in shipbuilding, health care, automotive manufacturing, aluminum production, and resort development, Kaiser's contributions had a significant influence on our Nation, our State and especially Hawaii Kai.

During World War I, Kaiser made a name for himself as a shipbuilder. His expertise in innovative designs and engineering skills proved invaluable to the war effort. After the war, he played a pivotal role in highway construction and was involved in large-scale projects such as the Hoover and Grand Coulee Dams. Notably, Kaiser's commitment to the well-being of workers led to his collaboration with Dr. Sidney Garfield to establish Kaiser Permanente, a groundbreaking prepaid health care solution that provided affordable medical benefits for dam project workers and laid the foundation for the modern health care system.

In World War II, Kaiser's shipyards became instrumental in the war effort once again. His pioneering techniques, including modular designs, use of interchangeable parts,

welds instead of rivets, and innovative materials like aluminum and concrete, enabled his shipyards to produce Liberty Ships in a remarkably short time frame. At the peak of production, they produced a Liberty Ship every two weeks. Kaiser also applied his engineering and construction innovations to the aircraft industry, further contributing to the nation's defense capabilities.

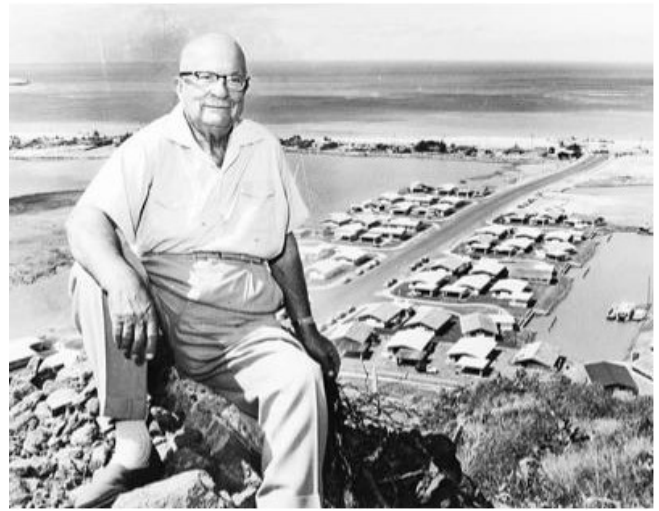
After the war Kaiser formed the Kaiser-Frazer car company. The car, Henry J, was designed to carry the fewest possible components and built from the fewest number of parts. Early Henry Js did not have rear trunk lids, a glove compartment, armrests, or a passenger-side sun visor. The car was available only as a two-door sedan with fixed rear windows – not every idea works.

Henry Kaiser founded Kaiser Aluminum in 1946 by leasing and later purchasing aluminum facilities in Washington state from the United States Government.

This venture proved to be highly successful, with millions of Kaiser Aluminum products, such as the iconic Swanson Frozen Dinner trays, becoming a part of daily life in the 1950s.

Kaiser's entrepreneurial spirit extended beyond engineering and manufacturing. In the early 1950s, he "retired" to Hawaii, where he foresaw the potential for post-war tourism. His vision led to the creation of the Hilton Hawaiian Village, a tropical resort that included gardens, swimming pools, bungalows, and a 5-acre fishpond named the Duke Kahanamoku Lagoon. Kaiser's resort development projects helped promote Hawaii's tourism industry and statehood. He also ventured into media by establishing a radio and television station, KHVH (now KITV), utilizing the production facilities to support his resort and statehood promotion efforts.

The term “Kaiser’s Folly” pops up in press descriptions several times over the course of his last development. Experts believed that “Kuapa Pond area” was undevelopable; creating 3,000 acres of the land would require a herculean engineering feat to develop. The Kuapa Pond itself consisted of five hundred acres of shallow wetlands, from six inches to one foot deep. Kaiser sought to transform the area into both dry land for housing and waterways for boats and water activity. The concept proposed was a \$350 million development that could provide 30,000 homes, schools, shopping centers, a golf course, parks and eventually houses for up to 75,000 people. Over two million cubic yards of coral were dredged to form the new shoreline. The construction of the marina alone required the evacuation of more than 2.5 million cubic yards of dirt and the placement of over 200,000 tons of rock. Looking around today Hawaii Kai is a truly monumental accomplishment.



It is estimated that over his lifetime, Henry Kaiser started over one hundred companies, many of them containing the name Kaiser. Little wonder when Kaiser’s development team brought forward a list of possible names to market the development, that Henry

thought the name Hawaii “Kai” had a nice ring to it. Kaiser died in 1967 but not before he personally welcomed lucky homeowners to their new houses in Hawaii Kai.

So next time you drive past Kaiser High School, think of Henry J.

AOAO Kalele Kai  
1 Keahole Place  
Honolulu, HI  
96825

Management Office Hours  
Monday—Friday 8:00 AM—5:00 PM  
Office Phone: 808-395-0431  
Security: 808-232-4821

